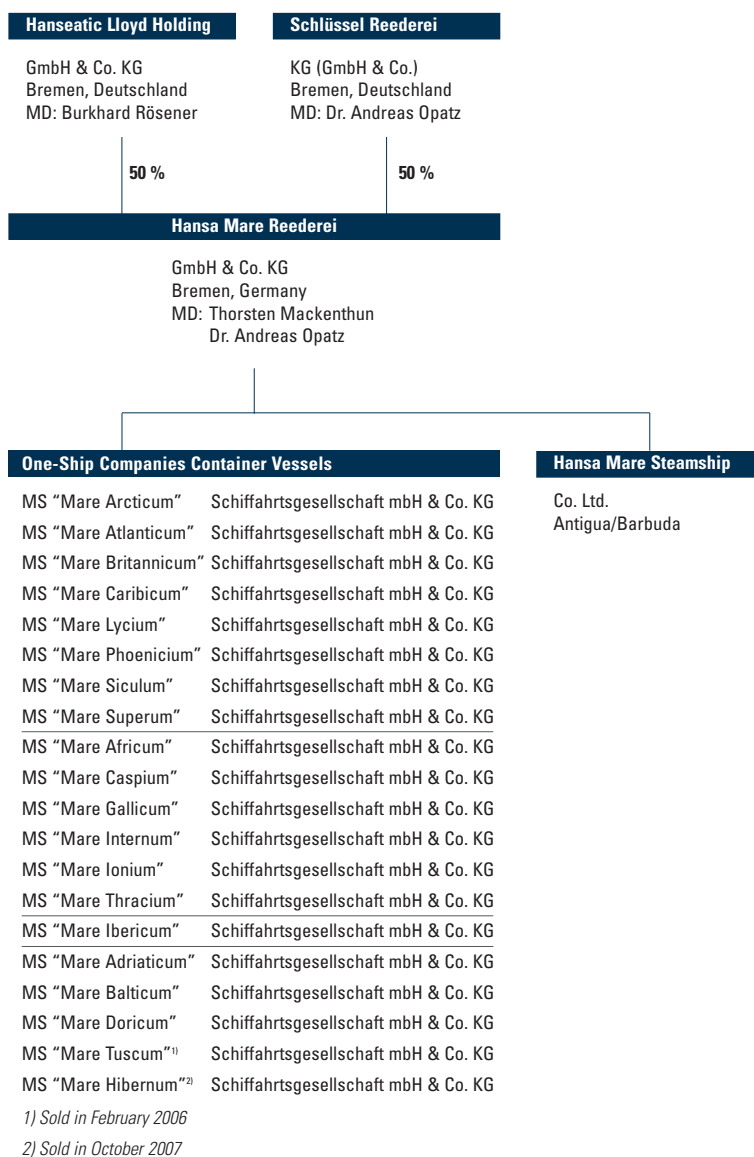


STRUCTURE OF THE HANSA MARE REEDEREI



Advisory Board of the Hansa Mare Reederei

Olaf von Maydell
Merchant, Berlin

Thomas Meier-Hedde
Merchant, Hamburg

The Management

Thorsten Mackenthun
Managing Director of Hansa Mare Reederei GmbH & Co. KG and Managing Partner of Hanseatic Lloyd Reederei GmbH & Co. KG, Bremen

Dr. Andreas Opatz
Managing Director of Hansa Mare Reederei GmbH & Co. KG and Managing Partner of Schlüssel Reederei KG (GmbH & Co.), Bremen

(Status as at: July 2010)